

WHITE IRONSTONE NOTES

VOL. 19, No. 3



WINTER 2013



GRAVY BOATS

This cover displays a sampling of the shapes of white ironstone shapes of gravy boats. The drawings are by Ernie Dieringer. The shapes from top left are: Berlin Swirl by Mayer & Elliot, Ceres Shape by Elsmore & Forster, Curved Gothic by Alcock, Eagle by Davenport

and also Wedgwood, Fig/Union by Davenport and Wedgwood, Coral aka Fluted Pearl by Wedgwood, Framed Leaf by J. W. Pankhurst, Full Ribbed by J. W. Pankhurst, and Hyacinth by Wedgwood & Co.

GRAVY BOATS

WHITE IRONSTONE CHINA GRAVY BOATS

A gravy or sauce boat is a boat-shaped pitcher with a lip and handle from which gravy or sauce is served. Some boat shaped pitchers have been identified as being used since ancient times. The modern use of gravy boats probably derived from fashion in the late 17th century French Court when a nouvelle cuisine in which reduction sauces were served in silver boats to accompany meat, vegetable and desert dishes. These sauces could be served either hot or cold often in a sauce tureen or the newly revived sauce boat. French fashion was highly influential in 18th century England where by 1750 such sauce boats were copied in English silver (see Fig. 1). More elaborate late Victorian silver designs were made, similar to those of embossed ironstone (see Fig. 2). Early English ceramic versions were included in cream ware and pearl ware dinner services. Later white ironstone china services included two gravy boats and also two sauce tureens. Many boats had matching trays and a few that were attached. The sauce tureen trays often are the same and are interchangeable with a gravy boat. The tray was intended to catch any dripping sauce as it was passed at the dinner table. Gravy boats were also made with double handles and double pour spouts. (Fig. 3) The child's size dinner sets also included a pair of gravies. (Fig. 4 & 5)



Fig. 1 above. English sterling silver



Fig. 4 above. Bulbous Octagon partial child's set by Pankhurst.



Fig. 2 above. Reed & Barton, c. 1875.



Fig. 3 above. Unknown potter.



Fig. 5 above. Minton's child-size dinner service (no shape name). Notice the gravy boats saucer and soup tureens all have four feet.

GRAVY BOATS



Arabesque, Livesley & Davis, c. 1867-71.



Arched Wheat, R. Cochran & Co. after 1860.



Athens Shape, Podemore Walker & Co., reg. 1857.



Atlantic Shape, T. & R. Boote, c.1858.



Balanced Vine, Clementson Bros, reg. 1867.



Bell Flower, John Edwards, c. 1860.



Berlin Swirl, Mayer & Elliot, c. 1856.



Boote's 1851 shape, T. & R. Boote, reg. 1851.



Bordered Fuchsia, A Shaw, c. 1860s.



Bordered Hyacinth, W. Baker & Co. c. 1860s.



Bow & Tassel, Burgess & Goddard, c. 1878.



Britannia, Powell & Bishop, c. 1878.

GRAVY BOATS



Budded Vine, J. & G. Meakin, c. 1869.



Cable & Ring aka Cable & Bar, Cockson & Chetwyn, c. 1870s.



Centennial, W. & E. Corn, reg. 1874.



Ceres Shape, Elsmore & Forster, reg. 1859.



Chain of Tulips, J. & G. Meakin, c. 1860s.



Chinese Shape, possibly T. & R. Boote.



Citron, J. Clementson, reg. 1864.



Classic Gothic, I. Meier & Son, 1840s.



Classic Gothic, Wedgwood, 1840s.



Columbia Shape, Challinor, reg. 1855.



Columbia Shape, Clementson, reg. 1855.



Coral/Fluted Pearl, Wedgwood, reg. 1847.

GRAVY BOATS



Corn & Oats, Davenport and Wedgwood, reg. 1863.



Unknown plain shape, Elsmore & Forster, c. 1870.



Curved Gothic, Davenport. c. 1840s.



Curved Gothic, James Edwards, reg. 1843.



Curved Gothic, Phillips, c. 1840s.



Curved Gothic Swan handle, no mark, c. 1840s.



Curved Gothic, T. J. & J. Mayer, Reg. 1847.



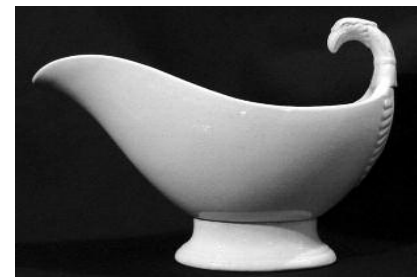
DeSoto Shape, Thomas Hughes, reg. 1855.



Double Sydenham aka Wrapped Sydenham, A. Shaw, c. 1855.



Dover Shape, J. Furnival, reg. 1861.



Eagle handle, Davenport and Wedgwood probably 1850s.



Eagle, Pratt & Simpson. Reg. 1878.

GRAVY BOATS



Early Swirl and undertray, Francis Morley, reg. 1845.



Fig/Union Shape, Davenport and Wedgwood, reg. 1856.



Fluted Panels, Beardmore & Dawson, reg. 1853.



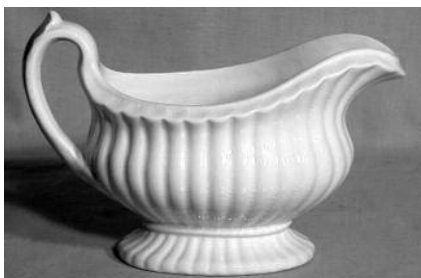
Forget Me Not, Challinor, 1860s.



Framed Leaf, J. W. Pankhurst, 1850s.



Fuchsia, J. & G. Meakin. c. 1860s.



Full Ribbed, J. W. Pankhurst. c. 1850s.



Grand Loop, Jacob Furnival, c.1850s.



Grand Loop aka Loop & Line, possibly Pankhurst.



Grape Octagon, E Challinor and many other potters, reg. 1851.



Greek Key, J. W. Pankhurst, reg. 1863.

GRAVY BOATS



Hidden Motif, Jacob Furnival, 1860s.



Hill Shape, Clementson, reg. 1860.



Hyacinth. Wedgwood & Co., 1860s.



Iona Shape, Powell & Bishop, c. 1880.



Ivy Wreath Shape, I Meir & Son., reg. 1860.



Jumbo Shape, Henry Alcock, 1860s.



LaFayette Shape, Clementson, c. 1860s.



Laurel Wreath aka Victory Shape, Elsmore & Forster, reg. 1867.



Memnon Shape, I Meir & Son, reg. 1857.



Olympic Shape, James Edwards & Son, 1865.



Oriental Shape, W. & E. Corn, c. 1860s.



Paneled Columbia, potter not known, c. 1857.

GRAVY BOATS



Paris Shape, John Alcock, reg. 1857.



Prairie Flower, T. & R. Boote, 1862.



President Shape by John Edwards, reg. 1855.



Prize Bloom, T. J. & J. Mayer, reg. 1853.



Prize Medal, T. J. & J. Mayer, reg. 1851.



Quartered Rose, Jacob Furnival, c. 1860s.



Ribbed Chain, J. W. Pankhurst. c. 1860s.



Ribbed Oak & Acorn, W. & E. Corn, 1878.



Scalloped Decagon, Davenport and also Wedgwood, reg. 1853.



Scrolled Bubble, J. W. Pankhurst, c. 1850s.



Sevres Shape, John Edwards, c. 1860s.



Sharon Arch, Davenport and also Wedgwood, reg. 1861.

GRAVY BOATS



Square Rosebud, James Edwards, reg. 1848.



St. Louis Shape, John Edwards, reg. 1858.



Stafford Shape and Trent Shape, J Alcock, reg. 1855.



Sydenham Shape, T. & R. Boote, 1853.



Split Pod, James Edwards, 1865.



Twin Leaves, James Edwards, reg. 1851.



Union Shape, T. & R. Boote, reg. 1856.



Vintage Shape, E. & C. Challinor, 1860s.



Walled Octagon, Jacob Furnival, c. 1850.



Wheat & Clover, Turner & Tompkinson, 1860s.



Wheat & Hops, J. & G. Meakin and many other potters, 1860s.



Wheat, Jacob Furnival, c. 1860s.